



COSMO CONSULT
Business-Software for People



**Business
Software
for People**

cc | data integration suite

EASY INTEGRATION OF EXTERNAL SYSTEMS (ADO / SQL-SERVER / MICROSOFT SHAREPOINT)

INTEGRATION OF ANY TABLE WITHIN MICROSOFT DYNAMICS NAV

FLEXIBLE XML STRUCTURE

CROSS-CLIENT DATA EXCHANGE

EXTENSION OF OWN MAPPINGS VIA CODEUNITS AND VARIABLES

FAST IMPLEMENTATION

COMPLETE AND INCREMENTAL DATA EXCHANGE

ERROR MANAGEMENT WITH E-MAIL NOTICE

DATA EXCHANGE BETWEEN DIFFERENT EXTERNAL SYSTEMS

AUTOMATION OF ANY PROCESS IN MICROSOFT DYNAMICS NAV

PAPERLESS DOCUMENT EXCHANGE

DIRECT DATA EXCHANGE WITHIN A DATABASE

Microsoft Partner
Gold Enterprise Resource Planning



COMPANY PROFILE



"With the Data Integration Suite, I can communicate **quickly** and **flexible** across different software systems"

COSMO CONSULT specialises in the implementation and system management of **industry and business solutions** based on cutting-edge software technologies. We deliver industry-oriented complete solutions for midsize businesses in the manufacturing, service and retail industries by providing an extensive range of industry-specific and special solutions based on **Microsoft Dynamics** and **QlikView**.

We offer our customers over 18 years of national and international project experience in the implementation of **Microsoft Dynamics NAV** (previously Navision) and **Microsoft Dynamics AX** (previously Axapta) ERP solutions. We are also experts in the **Microsoft Dynamics CRM** customer relationship management system and the **Microsoft SharePoint** document management and portal system, which can be integrated seamlessly into the ERP system environment. We therefore deliver fully integrated software systems for use in all areas of the company. With the aid of the **QlikView business intelligence solution**, our customers are able to access all of their company data in a structured and manageable format at any time.

An **implementation method** tailored to the project is a prerequisite for successful software implementation. For over 15 years, we have placed our trust in proven implementation methods when implementing our software projects, such as **SureStep** for successful ERP project implementation and the **agile implementation methodology** for rapid results when realising business intelligence (BI) projects.

At COSMO CONSULT, people are our focus. After all, it is people who decide whether our software is efficient or inefficient, who judge its strengths and weaknesses, who experience joy or frustration when using it and ultimately determine if it is a success. That's why we provide:

Business Software for People



cc|data integration suite

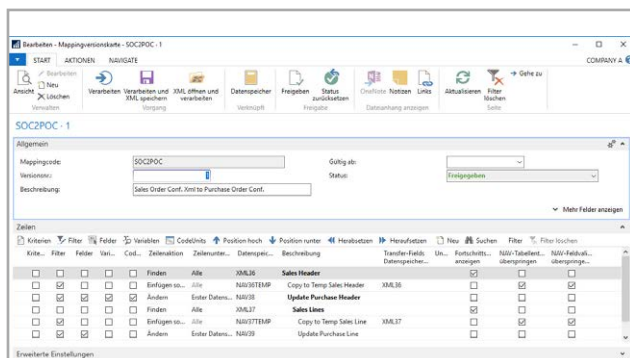
From the configuration-based processing of the data to the cross-client communication of software systems

cc|data integration suite allows bidirectional data exchange between Microsoft Dynamics NAV and external software systems using

- ▶ NAV tables,
- ▶ XML nodes,
- ▶ ADO tables (e.g., SQL) or
- ▶ SharePoint lists.

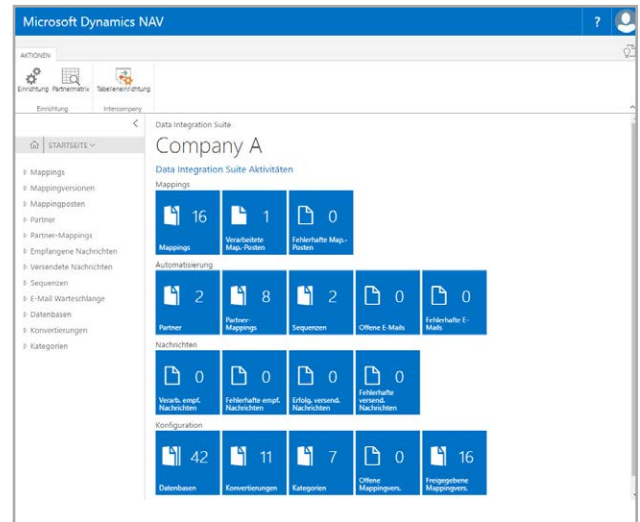


The data flow is controlled by what are called mappings, which can be easily adapted to requirements. The mappings can be created dynamically via filters, fields, criteria, variables and codeunits. Data sets modified via data bases can also be recorded to limit processing operations, e.g. only for new records. Actions such as “find” (loop over records), “insert”, “change”, and “delete” are available.



MAPPING CARD

This allows data from customers and vendors to be received and imported into any table. They pass through the same plausibility checks as with manual input. The Data Integration Suite is suitable for the exchange of master data as well as documents. Even subsequent bookings can be fully automated to run in the background. For the automated transfer of XML files, the extension “Intercompany” is necessary. It does not matter whether the software is accessed via the Windows or web client.



ROLES CENTER IN THE WEB CLIENT

The highlights of the Data Integration suite are:

- ▶ Complete and incremental data exchange
- ▶ Integrate unlimited NAV tables, XML nodes, ADO tables, and SharePoint lists
- ▶ Integration of external systems, e.g. SQL Server and SharePoint
- ▶ Automation of any process within Microsoft Dynamics NAV
- ▶ Can be fully integrated into Microsoft Dynamics NAV
- ▶ Use your own source code with codeunits and variables
- ▶ Identify activities through logs and items
- ▶ Easy implementation

CC|DATA INTEGRATION SUITE-INTERCOMPANY

cc|data integration suite-Intercompany is an extension of the Data Integration Suite, which allows communication of NAV tables also across clients. The automated export / import of XML files is accomplished via so-called messages to the partner. Business processes and operations such as the exchange of data - e.g. orders, deliveries / goods dispatch and invoices as well as items, accounts receivable and payable - can be automated.

From the configuration-based processing of the data to the cross-client communication of software systems

You can set the system up to store partner-specific table filters so that each partner receives only the relevant master data or documents.

Mappings

Export	Import
Customer	Customer
Item	Item
Purchase order	Sales order
sales order confirmation	Update purchase order
Booked Sales Delivery	Purchase Delivery
Booked Sales Invoice	EK-Rechnung
Booked Goods issued	Good received

EXAMPLE MAPPING

Model mappings are available as a basis for custom configurations of the processes above.

Automated or on demand

With little programming effort, it is possible to execute mappings at the push of a button or in desired processes. For example, users can start an immediate export of the current item from the item card. Tables can be locked in terms of the modification of data for any client. That way, you can have a master client can, which maintains the master data and synchronizes the data in other clients.

The highlights of Data Integration Suite-Intercompany are:

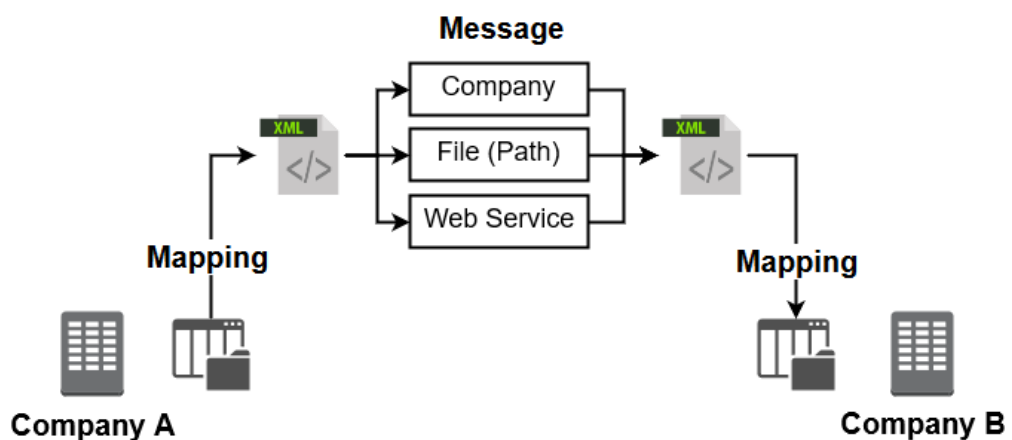
- ▶ Cross-client data exchange
- ▶ Direct data exchange within a database
- ▶ Paperless document exchange
- ▶ Supports various transfer modes
- ▶ Can be fully integrated into Microsoft Dynamics NAV
- ▶ Notification to administrators in order to manage processes

External application scenarios

Application scenarios include, for example, the integration of external systems via XML mapping, the integration of MES systems via SQL tables, the exchange of information via Microsoft SharePoint or the pull principle from different clients within the same database.

Cross-database communication

System communication takes place via XML files, which are exchanged between the clients and databases. Orders can be recorded and transferred to another client (or database) according to a mapping definition (message). Order, invoice and delivery are then transferred. In this way, master data can also be exchanged cyclically.



CROSS-DATABASE COMMUNICATION

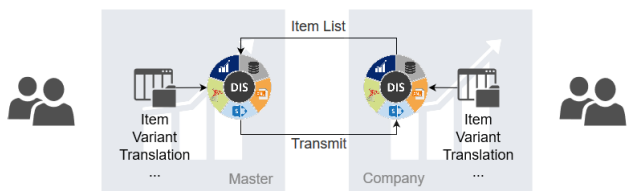
cc|data integration suite

From the configuration-based processing of the data to the cross-client communication of software systems

Communication within the same database

For clients within the same database, a direct communication can be used via the Data Integration Suite. Data can be queried and transferred directly from another client in accordance with the pull principle. A branch client can draw data that is configurable directly from a master data client via mapping.

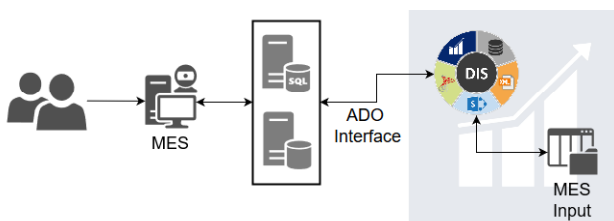
The information can thus be provided directly at the moment when it is needed.



COMMUNICATION WITHIN THE SAME DATABASE

Integration of MES systems

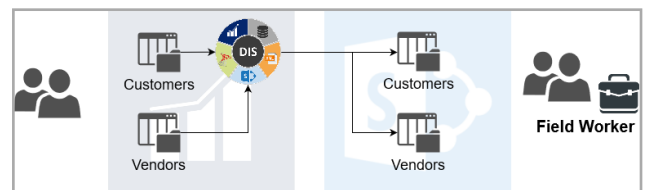
The cc|data integration suite integrates Microsoft Dynamics ERP with MES systems via e.g. SQL tables, or the exchange of information via Microsoft SharePoint. Due to the high degree of freedom in configuration, there are no limits to the varieties of integration.



MES INTEGRATION

Integration of employees in the field via Microsoft SharePoint

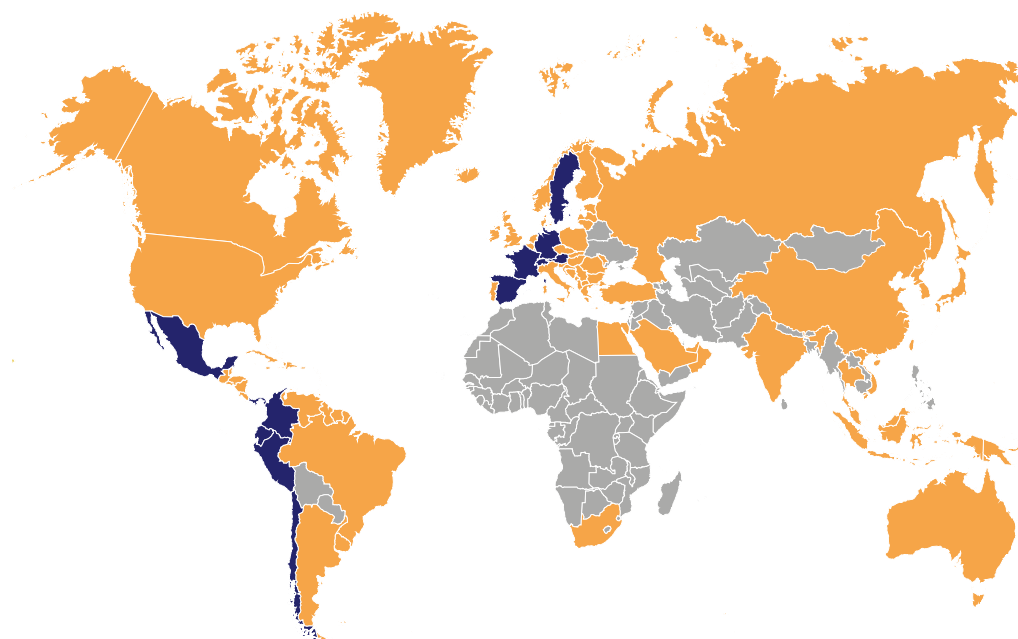
As a supplement to cc|dms - the COSMO CONSULT document management solution integrated in the ERP system - the user has many more possibilities than just uploading documents. SharePoint can also be enriched with Microsoft Dynamics NAV data to provide information to users without access to the ERP system. Employees in the field can, for example, access customer data via various kinds of mobile devices (such as a smartphone or tablet) without having to have explicit access to the ERP system. These functions are already part of the base functionality and can be quickly adapted to the individual needs of the project.



EXCHANGE OF ERP DATA VIA MICROSOFT SHAREPOINT

Compatibility

cc|data integration suite is compatible with NAV 2013 R2 and higher.



GERMANY | AUSTRIA | FRANCE | SPAIN | SWEDEN | SWITZERLAND | CHILE | COLOMBIA | ECUADOR
MEXICO | PANAMA | PERU

www.cosmoconsult.com